

Taiwan Team

- Taiwan Agricultural Research Institute (TARI):Main



- Bureau of Animal and Plant Health Inspection Quarantine (BAPHIQ)
- National Chung-Hsing University-Department of Entomology:



Taiwan Agricultural Research Institute (TARI)



Core Value

Resource integration → R&D enhancement

Resource
Integration

- Talents for basic research
- R&D strategies
- Innovation and research teamwork

Research & innovation strengthening → forward-looking technology

Research &
Development

- High yield for food security, high quality for food safety
- Healthy production system for agricultural sustainability
- Development of multi-purpose crops

Cross-domain cooperation → industry response model

Cross-domain
Cooperation

- Multi-disciplinary cooperation and modern technology utilization
- Digital technology and services for agricultural management
- Development of value-added Industries



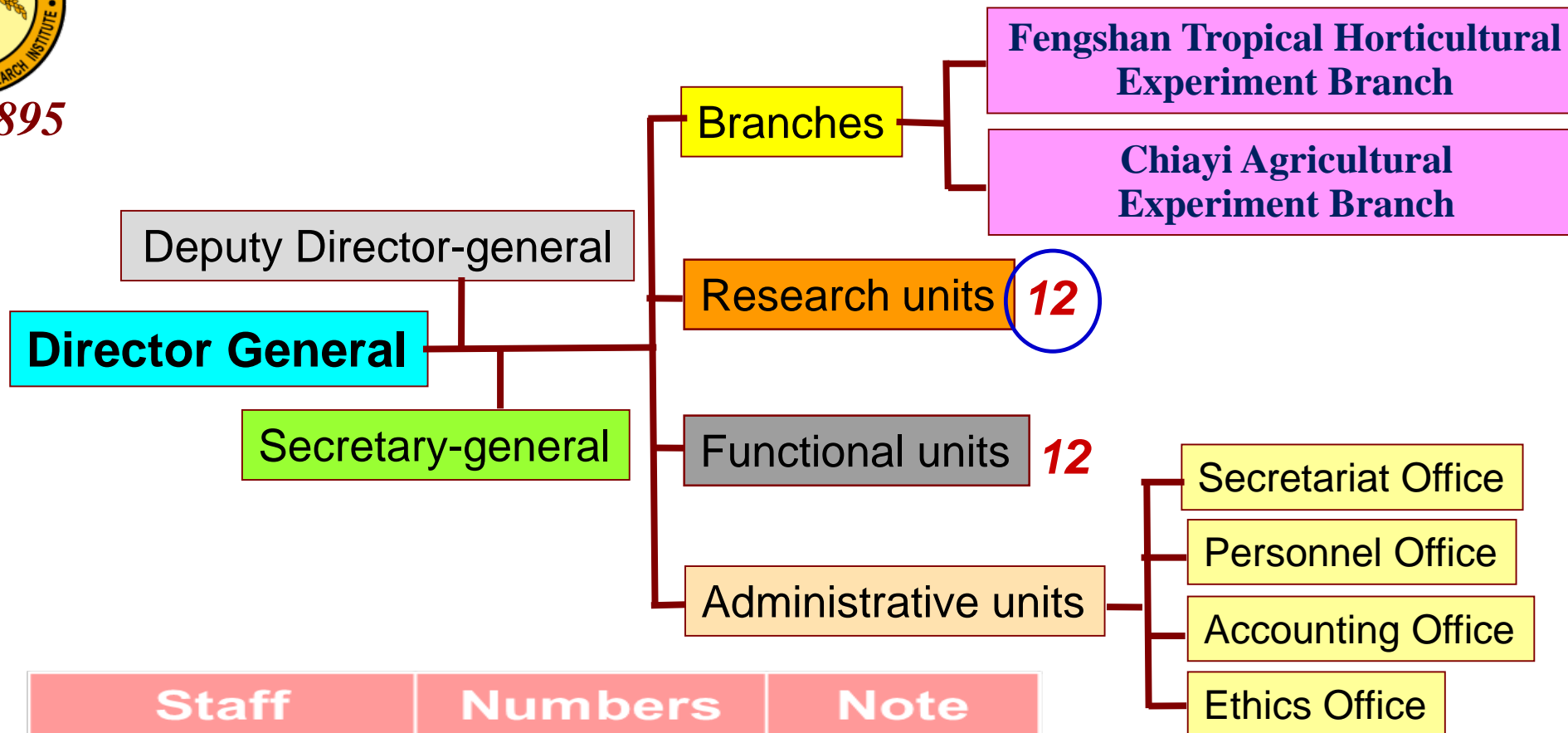
Leader of
agricultural
research and
innovation

Provider of
comprehensive
technical
solutions



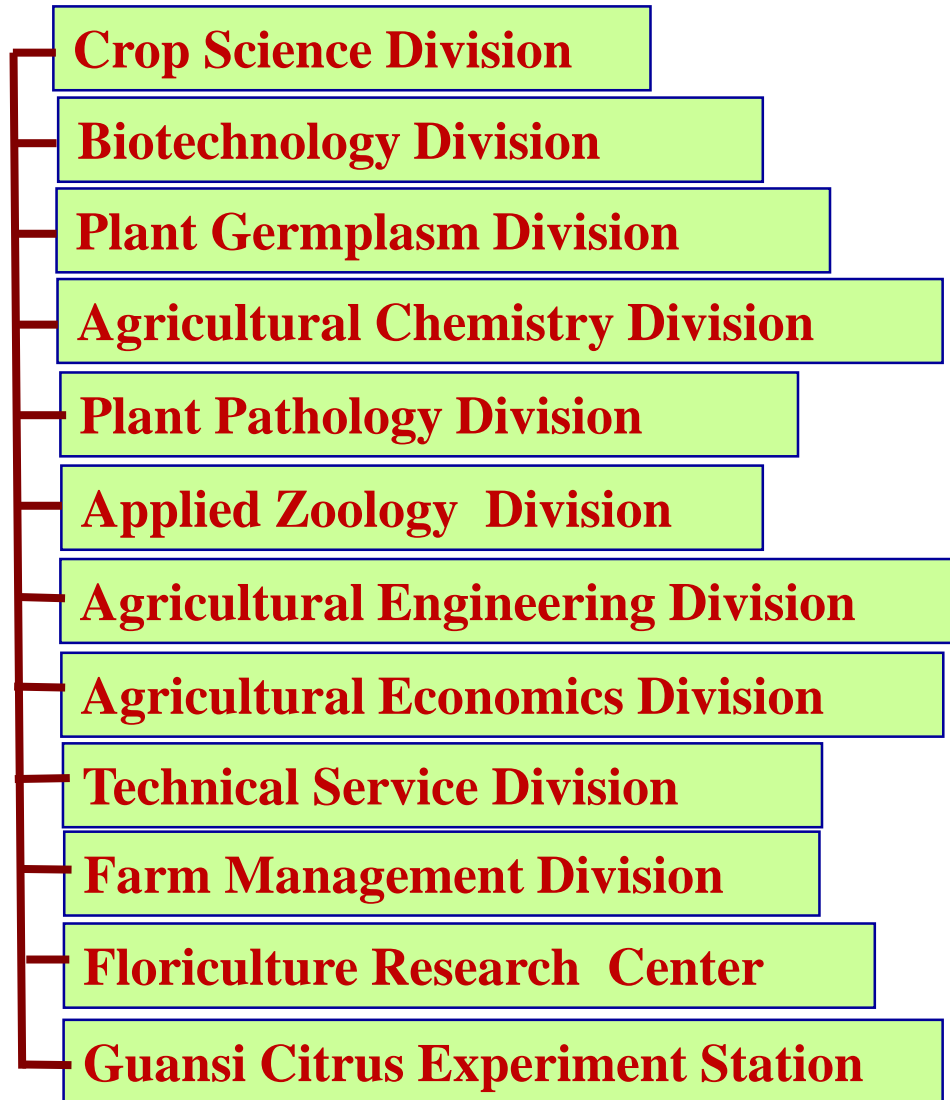
Since 1895

Organization and Staff



Staff	Numbers	Note
Researchers	194	> 85% of staff have Master or PhD degrees
Technicians	205	
Research Assistants	470	

Research Units



Crop-oriented R&D

- Rice
- Dryland crops
- Specialty crops
- Fruit trees
- Vegetables
- Flowers
- Mushrooms

**Functional
Laboratories**

相關位置圖 Location



業務狀況 Research Activities

本所從事農藝、園藝作物之遺傳、育種、種原、生理、組織培養、生物科技、土壤肥料、植物營養、病蟲害防治、農業經濟、農業機械及氣象等之科技研究，以改進各種作物之產量與品質。百餘年來本所對於台灣之糧食增產與農業經濟發展上，有卓越之研究績效與貢獻。

This institute conducts both basic and applied research for agronomic and horticultural crops in the fields of breeding and genetics, physiology, tissue culture, biotechnology, soils fertility and plant nutrition, diseases and pest managements, farm machinery, meteorology, agricultural economics, and extension. The varieties and technologies developed by the institute in the last fifty years have contributed greatly to agricultural productions in Taiwan and a rapid progress in rural economic development.

本所近年來育成品種統計表

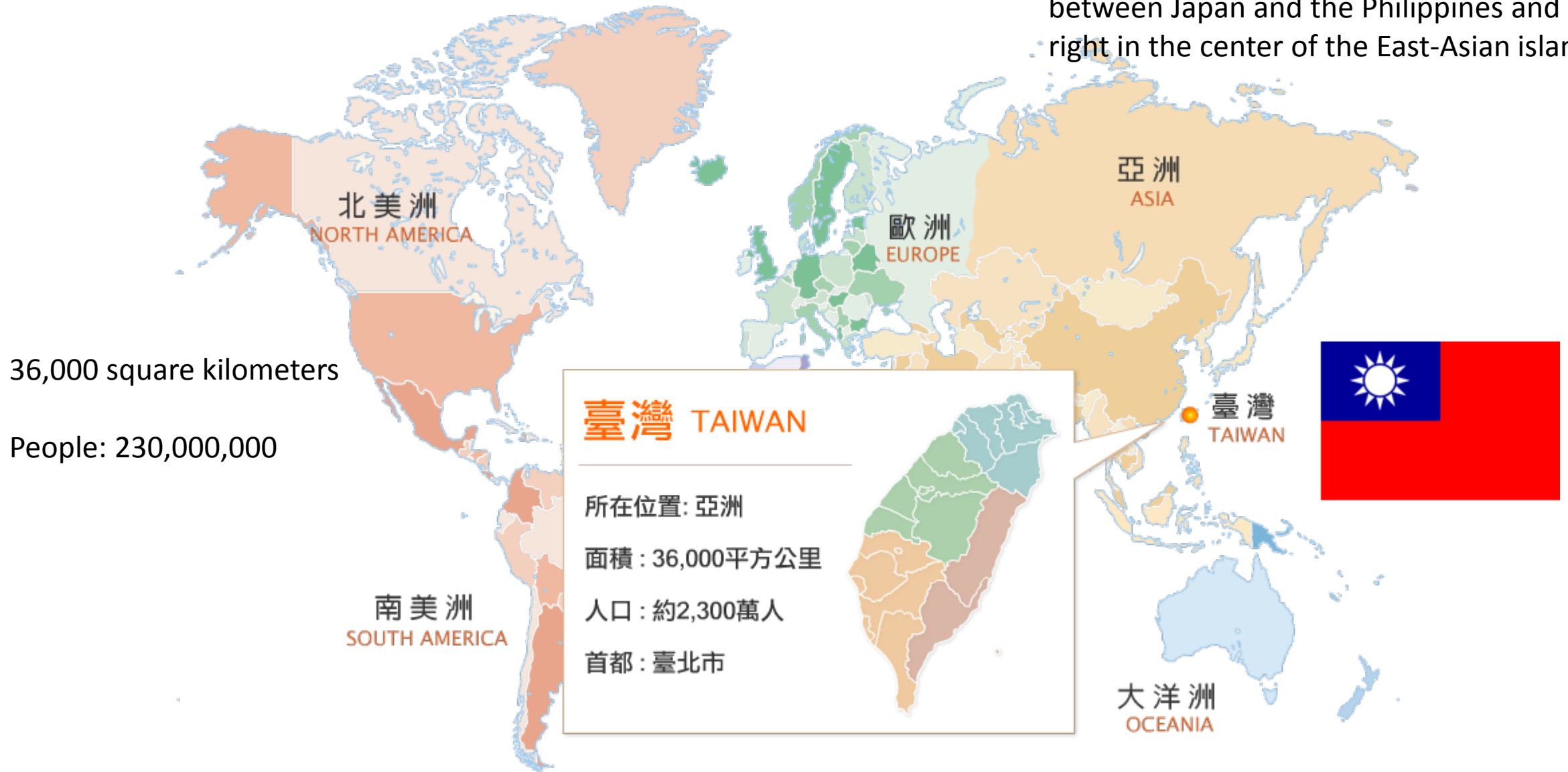
The statistic graph of varieties bred by TARI over the past.



種類(Kind) (年(Year))	稻作 (Rice)	雜糧作物 (Dryland Crops)	特用作物 (Special Crops)	果樹作物 (Fruit Crops)	蔬菜作物 (Vegetable Crops)	花卉作物 (Floral Crops)
2010 before	55	30	8	43	30	12
2011				5		3
2012	3			2	2	3
2013	3			1	1	2
2014		1		2	1	2
2015	1			1		1
總計	62	31	8	54	34	23

Where is Taiwan?

the southeast coast of the Asian Continent
at the western edge of the Pacific Ocean,
between Japan and the Philippines and
right in the center of the East-Asian island



Formosa ("Beautiful Island")

Formosa is what the Portuguese called Taiwan when they came here in the 16th century and saw the verdant beauty of the island. Located off the southeast coast of the Asian Continent at the western edge of the Pacific Ocean, between Japan and the Philippines and right in the center of the East-Asian island arc, Taiwan forms a vital line of communication in the Asia-Pacific region. It covers an area of approximately 36,000 square kilometers (14,400 square miles) and is longer than it is wide. **Two-thirds of the total area is covered by forested mountains and the remaining area consists of hilly country, platforms and highlands, coastal plains and basins. The Central Mountain Range** stretches along the entire country from north to south, thus forming a natural line of demarcation for rivers on the eastern and western sides of the island. On the west side, lies the Yushan (Yu Mountain) Range with its main peak reaching 3,952 meters, the highest mountain peak in Northeast Asia



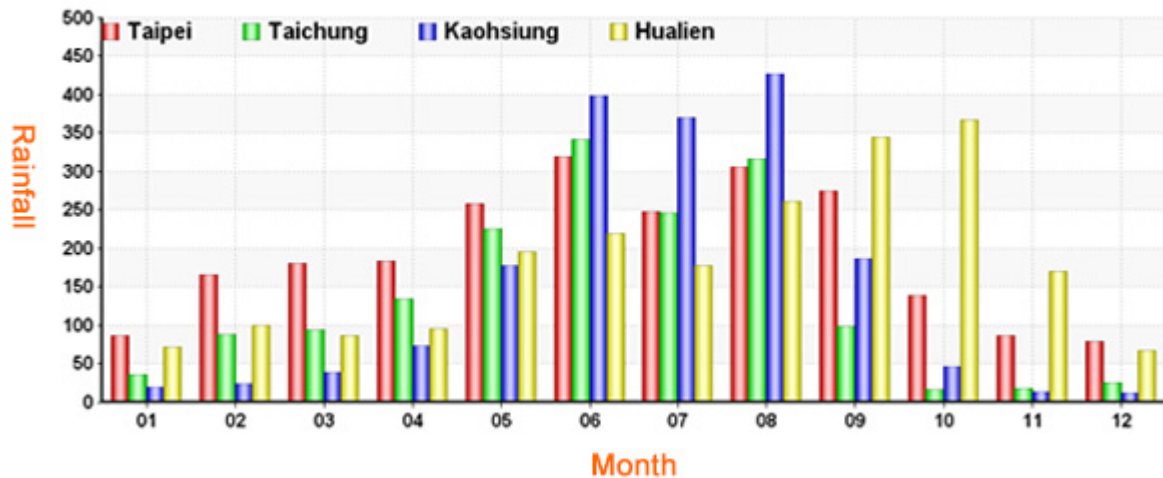
Climate in Taiwan

If you are from a high-latitude country, you can leave your winter coat behind when coming to Taiwan and enjoy the pleasant warmth of the sun.

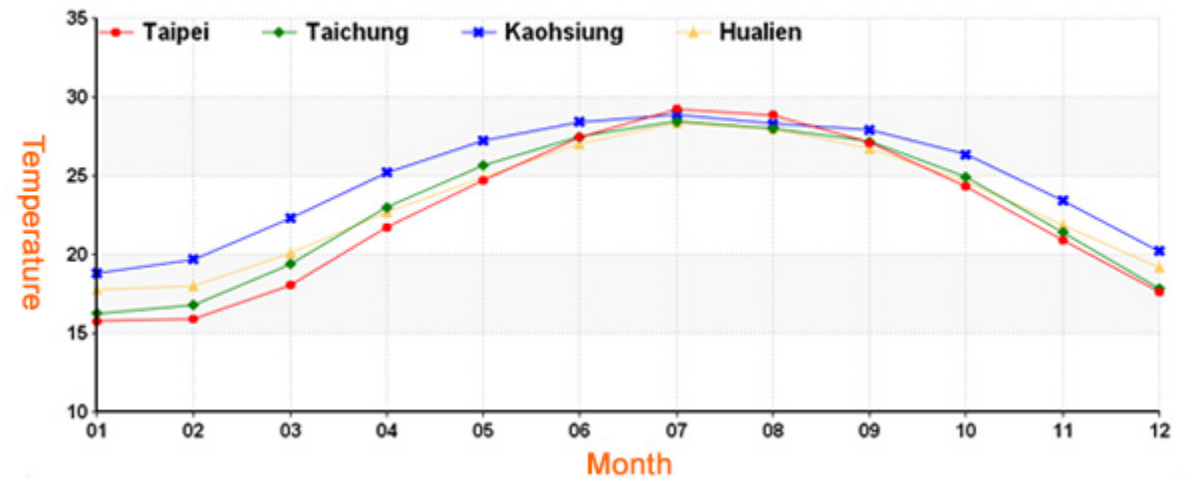
If you are from a low-latitude country, you will certainly revel in the comfortable warmth of Taiwan's sun. The coolness that hangs in the air will be a welcome change from the simmering heat of your native country.



(Refer to 1971-2000)

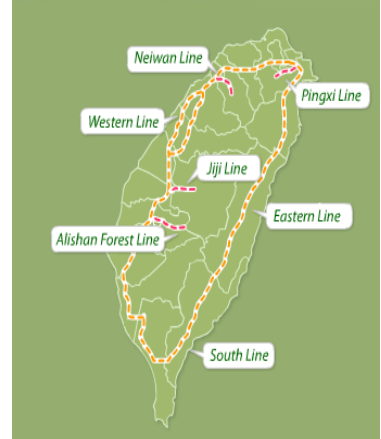


(Refer to 1971-2000)



Traffic of Taiwan

- **Airlines(Tao Yuan international airport)**
 - 4 International Airlines (TPE, TSA, KHH, RMQ)
 - 15 Domestic Airlines
- **Railway**
 - The island-wide railway network, including the western line, the eastern line, the north link line, and the south link line, provides convenient travel in a number of train classes. These trains give visitors a chance to see the varied scenery of Taiwan close-up as they travel around the island.
- **High Speed Rail**
 - With the opening of the Taiwan High Speed Rail (THSR), visitors can now easily take a day trip between Kaohsiung and Taipei. Currently twelve stations are operating on the THSR line down Taiwan's western corridor.
- **MRT**
 - The mass rapid transit system (MRT) in Taipei and Kaohsiung, together with the metropolitan areas' dedicated bus route networks, forms a convenient transportation system.
- **Intercity Buses**
 - Taiwan's long-distant highway transportation services are provided by private transportation companies: Kuo-Kuang Bus Corp., UBus, Free Go Bus Corp. and Aloha Bus, among others. They carry passengers on major highways and freeways.
- **Other**
 - Taxi, Car Rental, Marine Transport



Tastes of Taiwan



Pearl Milk Tea



Oyster omelet



Stinky Tofu



Steamed Dumpling

Steamed Sandwich



Taiwanese Meatballs



Meat Rice Tamales



Crushed Ice Dessert



Tea



Peanut Brittle



Pineapple Cake

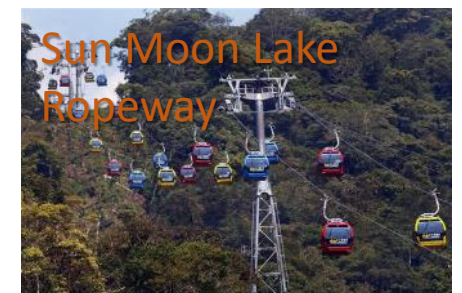


Sun Moon Lake National Scenic Area

The east side of the lake resembles a sun while the west side resembles a moon, hence the name.

It attracts 2-3 million people to sightseeing .

New couples enjoy honey moon day.



If you stay longer time

1. Taipei trip: National Palace Museum, Taipei 101



2. Alinsan National Scenic area: Sunrise

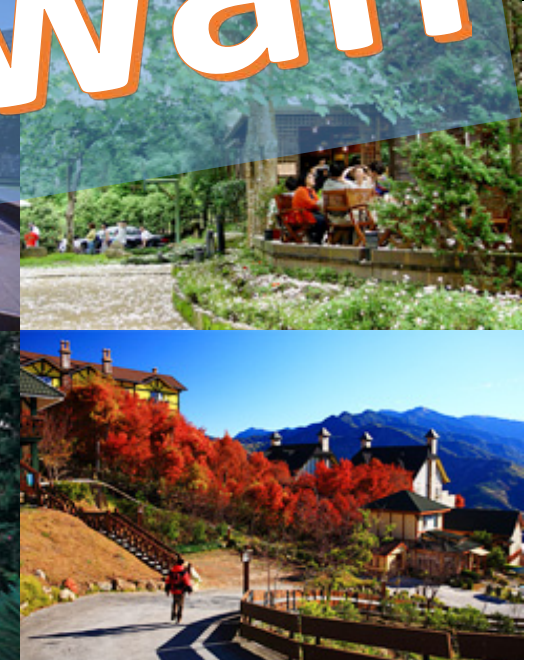


3. Kenting National Park: located at the southern tip of Taiwan.



4:Taroko National Park : to protect the natural scenery, historic relics and wildlife.





See you in Taiwan